



ALILIFT 



ALILIFT

ELEVATOR MANUFACTURERE & TRADING



INTRODUCTION

OUR STORY

ALILIFT brand founded in 2002 UAE, Dubai as manufacturer and Developer of elevators in any kind no matter what there is experience in engineering jobs such as steel fabrication machinery design and engineering Designs but our focus is on elevators and any vertical movement products Or in some cases horizontal.

OUR ELEVATOR OPTIONS

We have experience in these topics of lifts and elevators:

- ✓ **Building & towers elevators** (with different shapes and capacity).
- ✓ **Home & villa lift** (as our customers are requiring, we will design and manufacture their desire).
- ✓ **Industrial lift** : cargo lift, shop lift, store and showroom lifts.
- ✓ **Special design lifts & elevators.**

International partners

prisma doors.co
Italy



MP wire ropes.co
Italy.



ziehl-abegg motor.co
Germany



Movilift boy photocell.co
Italy.

Gem motors.co
Italy.



Gen Elektromekanik
San. Tic. Ltd.(buttons)
Turkey

Arkel control panels.co
turkey



Monteferro Guide
rails company - italy



Centa overloads sensors.co
turkey



Çelkray company
turkey

WHY

CHOICE ALLIANCE

quality control

Flexible payment modes

Huge distribution network

Ethical business strategies

clarity and transparency in deals

No welding required

products knowledge training for agents

Reliability

lift smooth ride

On-time delivery

long-time of experience

Range of profiles available.

Reduced builders work

24/7 Full technical support from
the company team

SAFETY FIRST

We strictly comply with UAE and global safety standards for life

- ✓ Safety of passengers
- ✓ Safety of equipment's
- ✓ Safety of person around the equipment



With our safety standards and god will we have zero injuries since starting and we are willing to process same rules and there is no negotiations or deals with safety costs

We use these systems for safety:

- ✓ Laser sensors
- ✓ Magnet locks (manual doors*)
- ✓ Extra emergency sensor
- ✓ Easy access in emergency times (fire)
- ✓ 3rd party certificates and important

Stickers



HOW TO BE OUR PARTNER

Together, We Can Build a Rewarding Business



- ✓ DO you want to invest in ALILIFT company or be a partner?
- ✓ Do you have skills in marketing and sales, or you have a customer?
- ✓ Do you want to be agent, dealer, or representative of ALILIFT?
- ✓ OR IF YOU HAVE A PLATFORM OR PROJECT TO SHARE WITH US

WE ARE ALL AVAILABLE TO CORPORATE WITH IN ALL MATTERS AND WE DO HAVE GOOD DEALS FOR YOU

SAVE OUR CUSTOMERS

**NO
Cosmissions**

**NO
Hidden
Costs**

**SAVE
Money
\$\$\$\$\$**

**NO
On-going
Fees**

**SAVE
Time**

**Keep
Promise**

**Keep
Customers
power**

TECHNICAL SUPPORT

Consumers (End *User) Support existence

- If your existing product is not working properly or your product is under warranty or if your product is no more under warranty and need service contact us to solve the problem

We do not provide free service for outside UAE and if applicable all the transfer expenses are on client shoulder

Please contact through email or phone number we will answer all of your questions

- In case of emergency please after noticing civil defence, they are trained for these situations
 - We provide a support service in real-time and with real highly-qualified personnel – no more long-winded and time-wasting pre-recorded messages. Our professional staff are always available to all our customers for consultation.
 - Our professional record is our best guarantee. In almost 20 years of existence, we have had not a single case of a lift getting stuck or a customer being left unattended.
 - We have spare parts available for all our lifts, all of which are easily traceable using the lift reference number, the plan reference number, the control system reference number – not to mention the site address.
- In addition, we design all our processes in order to facilitate our customers' work and add value to the systems we produce.

PAYMENT TERMS

- When we quote for you, we will confirm with you the way of transaction , FOB, CIF, CNF, etc. For mass production goods, you need to pay %50 deposit before producing and %50 balance against copy of documents. The most common way is by T/T. L/C is also acceptable.
- Orders will ship by the most efficient, method, based on your delivery requirements. Charges for freight, overnight delivery, insurance fees, and forwarding costs will be added to your invoice.

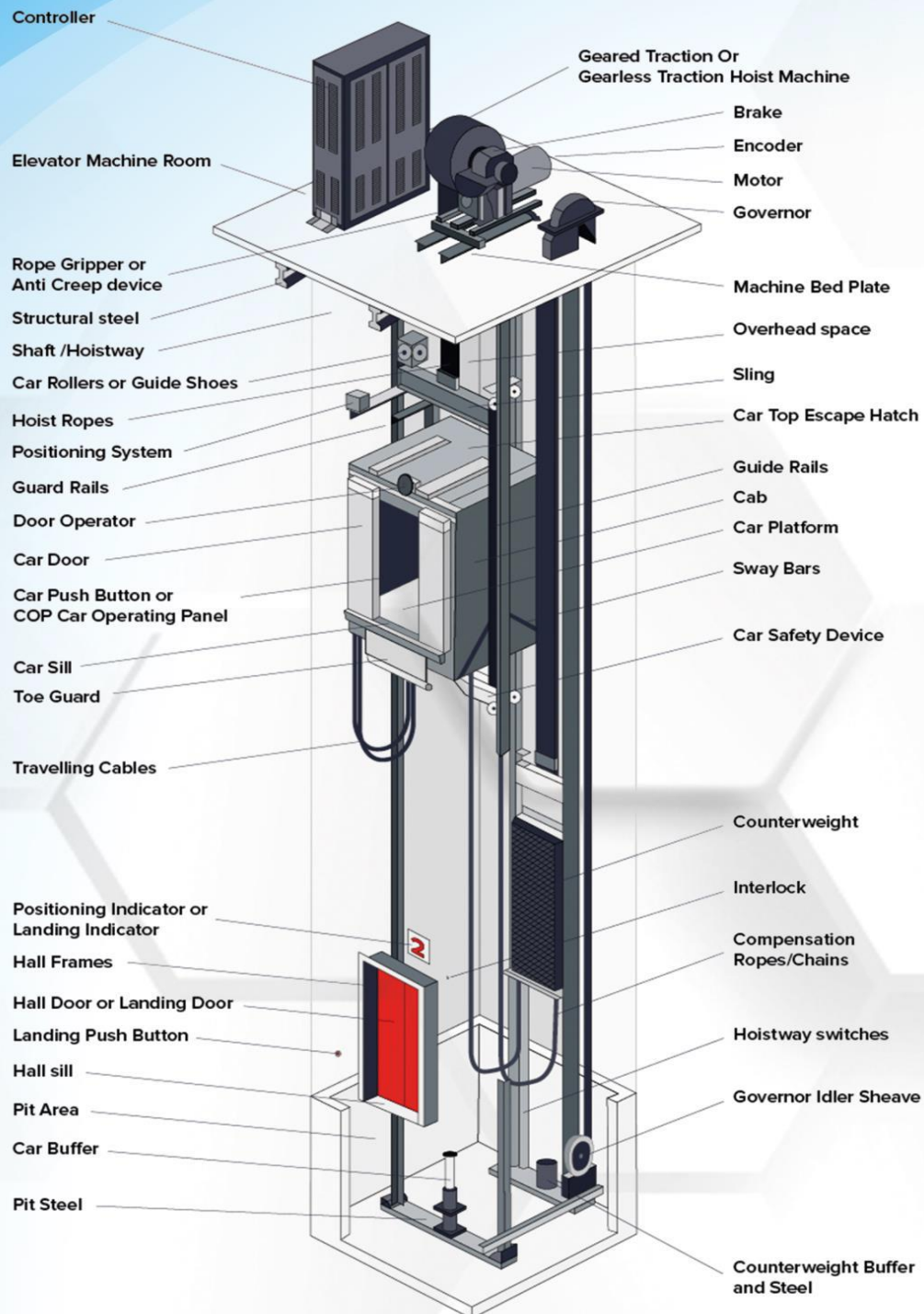


BUILDING ELEVATORS

In this part we will provide all the information you need to know about buildings and tower elevator from starting to end please follow us.

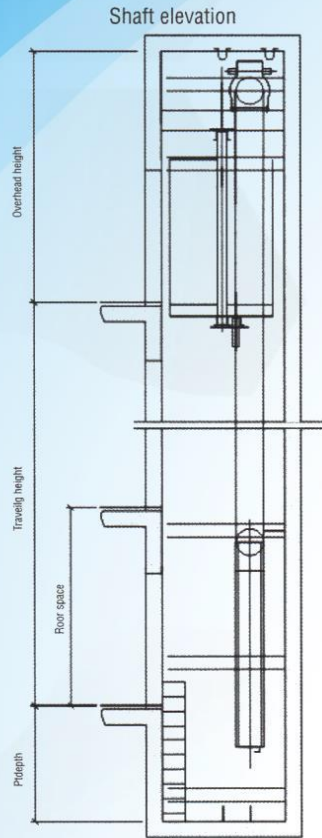


ELEVATOR FULL PACKAGE PARTS



SHAFT PLANNING

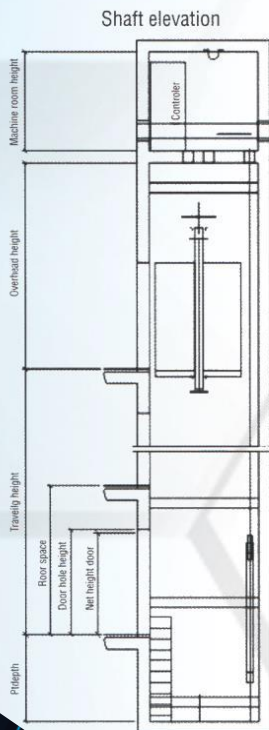
Machine Roomless Elevator



Machine roomless elevator specifications

Persons	Rated capacity (kg)	Rated speed (m/s)	Net size of car (mm)	Net size of door (mm)	Shaft size (mm)		
			C.W x C.D x D.H	2P Central opening	H.W x H.D	HR.H	PIT
6	450	1.0	1100x1100x2300	800x2100	2050x1850	4200	1500
8	630	1.0	1400x1100x2300	800x2100	2250x1900	4200	1500
		1.5/1.75				4400	1600
10	800	1.0	1400x1350x2300	800x2100	2250x1950	4200	1500
		1.5/1.75				4400	1600
		2.0				4800	1800
		2.5				4800	2000
13	1000	1.0	1500x1550x2300	900x2100	2350x2150	4200	1500
		1.5/1.75				4400	1600
		2.0				4800	1800
21	1600	1.0	1900x1800x2300	1100x2100	2850x2400	4500	1500
		1.5/1.75				4700	1600
		2.0				4900	1800
26	2000	1.0	1900x2200x2300	1100x2100	2900x2600	5100	2000
		1.5/1.75				4500	1500
		2.0				4700	1600

Machine Room Elevator



Small machine room elevator specifications

Persons	Rated capacity (kg)	Rated speed (m/s)	Net size of car (mm)	Net size of door (mm)	Shaft size (mm)			Machine room size (mm)	
			C.W x C.D x D.H	2P Central opening	H.W x H.D	HR.H	PIT	MR.W x MR.D	HR.H
6	450	1.0	1400x850x2300	800x2100	2000x1500	4000	1500	2000x1500	2500
8	630	1.0	1400x1100x2300	800x2100	2000x1720	4400	1600	2000x1720	2500
		1.5/1.75				4200	1500		
10	800	1.0	1400x1350x2300	800x2100	2000x1970	4200	1600	2000x1970	2500
		1.5/1.75				4400	1800		
		2.0				4800	2000		
		2.5				4800	2000		
13	1000	1.0	1600x1450x2300	900x2100	2200x2120	4200	1500	2200x2120	2500
		1.5/1.75				4400	1600		
		2.0				4800	1800		
		2.5				4800	2000		
		3.0				5200	2600		
		3.5				5500	3100		
16	1250	1.0	1900x1450x2300	1100x2100	2500x2150	4200	1500	2500x2150	2500
		1.5/1.75				4400	1600		
		2.0				4800	1800		
		2.5				5200	2600		
		3.0				5500	3100		
		3.5				6000	3850		
18	1350	1.0	1900x1550x2300	1100x2100	2500x2250	4200	1500	2500x2250	2500
		1.5/1.75				4400	1600		
		2.0				4500	1600		
		2.5				4800	1800		
		3.0				5200	2600		
		3.5				5500	3100		
21	1500	1.0	1900x1800x2300	1100x2100	2500x2500	4200	1500	2500x2500	2500
		1.5/1.75				4400	1600		
		2.0				4500	1600		
		2.5				4800	1800		
		3.0				5200	2600		
		3.5				5500	3100		
26	2000	1.0	1900x1800x2300	1100x2100	2700x2500	6350	4300	2700x2500	2500
		1.5/1.75				4500	1500		
		2.0				4700	1600		



ELEVATOR STRUCTURE

These particular projects require the use of structures, which can be freestanding or they can be fitted onto the wall. The lift structures can be installed both in new and existing buildings and they can be supplied suitable for indoors or outdoors environments.

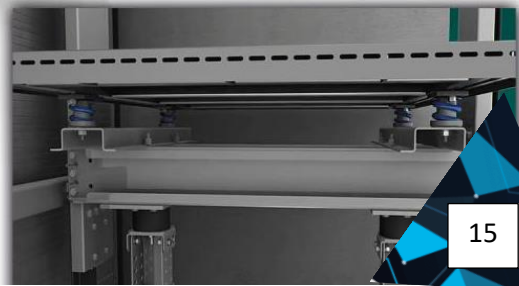
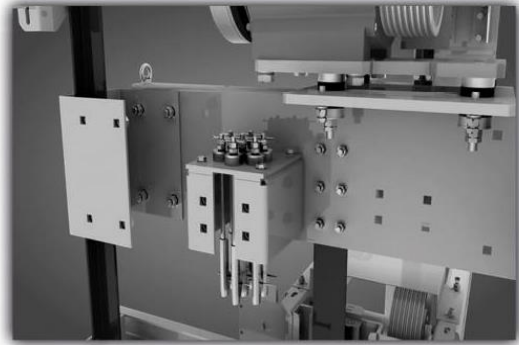
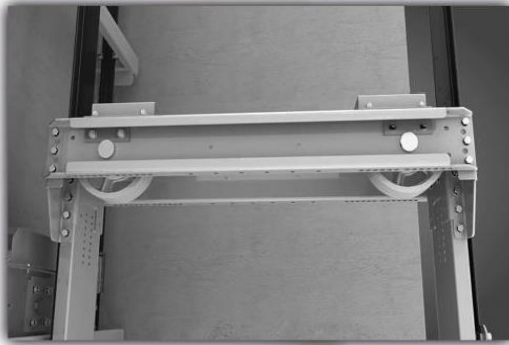
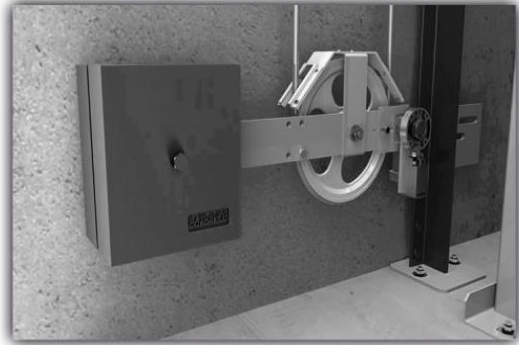
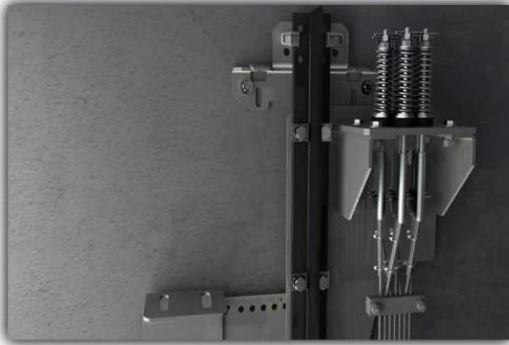
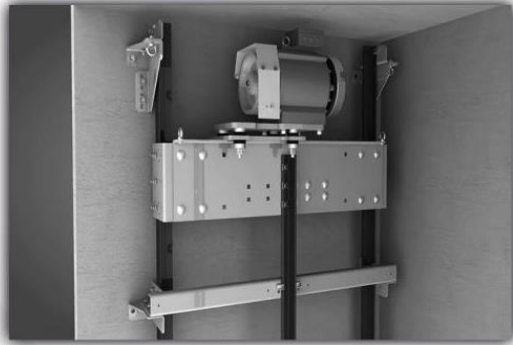
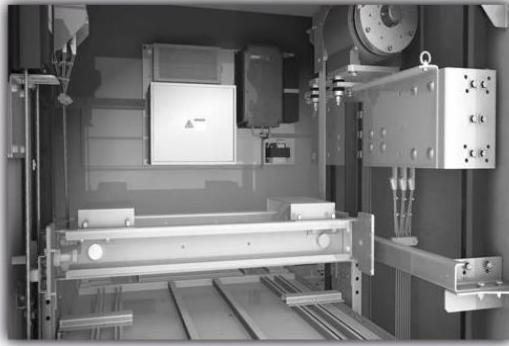
Structure advantages

- **Bespoke design:** Each of our lift structures has a bespoke design to properly suit the lift equipment. Our engineers study case by case where the structure is going to be installed, the number of floors, environmental conditions, and other specifications so we can offer a fully customized solution.
- **Safe and quickly assembly:** Our lift structures are modular design and the highly detailed manuals and drawings we provide make our structures very easy to install and allow our customers to save time and money in the installation process.
- **Self-supporting options:** available.
- **Existing building installation :** when your building is not strong enough to support lift loads and fixings.
- **Solution for timber frame buildings..**
- **Extensive range of colours :** as well as clad or glass options available.
- **Internal or external installation.**
- **Installation service offered.**
- **Lifting beam :** available on request.
- **Reduced builders work.**
- **Range of profiles available.**
- **Full range of accessories available.**
- **No welding required.**
- **3-D design and modelling.**

- **ALILIFT, Lift structures accomplish the norms and regulations. They are certificated for its compression resistance capacity to both the dead weight and the variable loads exerted by the lift car and the structure. The resistance capacity of the cladding panels is certificated according to the EN20-81 European Standard.**



ELEVATOR MECHENICAL PARTS



Full Package Partes

ELEVATOR ENTRANCE

Sill:

Manufactured standard as a quality aluminium (bronze or nickel-bronze, or Aluminium) sill with a grooved slip-resistant surface Provided with anchors to fasten to floor slab or optional sill support angles.

Unit Frame:

Manufactured of "high Level Grade, carbon steel (304)stainless steel or sheet bronze alloy (-280Muntz) of -16gauge minimum thickness . Formed of one-piece metal comprising of integral trim and span fire-rated shaft walls. Provided with listed interface anchorage and UL labelled accordingly

Header/track supports:

Formed of zinc-coated steel, -10gauge minimum thickness, extending the full travel of the door(s). Anchored securely to the unit frame, adjacent wall, or beam above

Door(s):

Manufactured of "high Level Grade" carbon steel(304). of -18gauge minimum thickness (available) in -14 gauge or -16gauge if required Fabricated to enclose sound-absorbing material of 1.25" minimum thickness Rated for 2/1-1 hour fire resistance and UL labelled accordingly Can be clad with stainless or bronze



Full Package Partes



Hanger Cover

Plate (when provided) :

Fabricated of -16gauge-zinc coated steel extending the width of the opening or the full travel of the door(s).

Fascia:

Fabricated of -16gauge minimum thickness zinc-coated steel extending the full width of the opening, fastened to header and sill of the floor above

Finish Quality:

All metal surfaces are thoroughly cleaned and treated to prevent corrosion
Enamel finishes are coated with EPA compliant primers and top coated with quality baking enamels cured to 3-mil minimum thickness ,,,
Bronze materials are coated with a factory-applied stripp able lacquer for job site repair when necessary

Struts (when provided):

Formed of zinc-coated steel -10gauge minimum thickness; or of structural angles, as required

Toe Guard And Dust Cover:

Fabricated to be similar to fascia material but bevelled to a 60-degree angle to fasten to the wall below the sill and above the header

Elevator Cabin



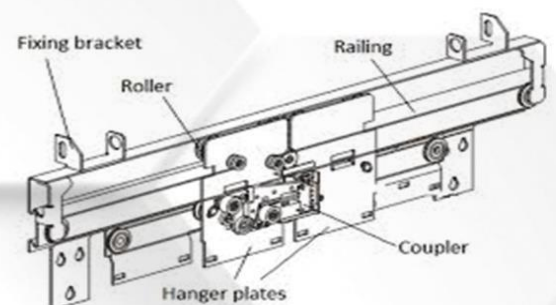
Elevator cabin outstanding selection for new construction ALILIFT commercial passenger elevator cabin line offers a variety of aesthetic options and features for use in all types of buildings: office complexes, apartment buildings, hospitals, etc. we offer steel shell with hanging panels. ALILIFT cabins can bear a TEST & ISO 9001, label to certify code compliance when required. Contractors engaged in new construction may use any of ALILIFT cabin design



Compliance, ALILIFT elevator products exclusive feature every elevator cabin manufactured by ALILIFT is subjected to a rigorous in-plant inspection and certified to be in full compliance with (EN 1-81 and EN 50-80) | iso 9001, elevator safety code, whether the cabin is manufactured using a steel shell, wood core or steel with hanging panels, the building owner can rest assured that the product will be code compliant.

ELEVATOR CONTROL DOORS

ALILIFT & Prisma design and produce automatic car and landing doors along with a range of door operators for lifts. With a long-established history, they have become well known for the quality and modern design of their products. Prisma is a customer orientated organisation, with the philosophy of being a "friendly supplier". products are undergoing substantial development to improve and add to their existing product range.



Landing & cabin control Doors:

- panel sides opening or centre opening door panels
- Includes door mechanism with hangers
- EN81- lock release and self closer
- Aluminium sill complete with door shoes
- Finish either primed or satin stainless steel
- many door sizes
- Galvanised toe guard
- Fire rated
- Door supplied un-assembled

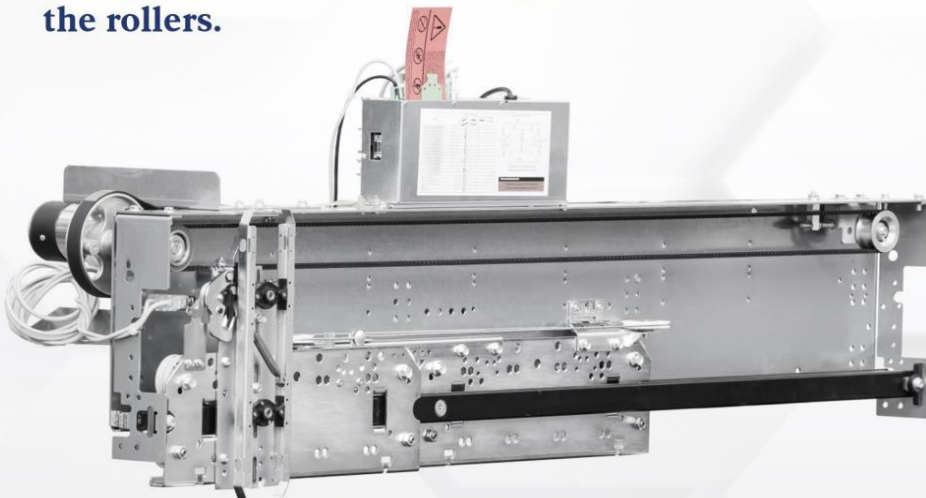
The **MACRO** series car door operator is ideal for use in high-traffic lifts. Harmonic and noiseless movement with high opening speeds, makes the Macro the perfect operator even for the most challenging conditions.

The **MACRO** Series car door operator can be used as a replacement for the Linear DOS model. It is very robust and medium sized sliding rollers are installed as standard, while large rollers are used for heavy panels. Both rollers have a 67 mm diameter (64 mm rolling diameter).

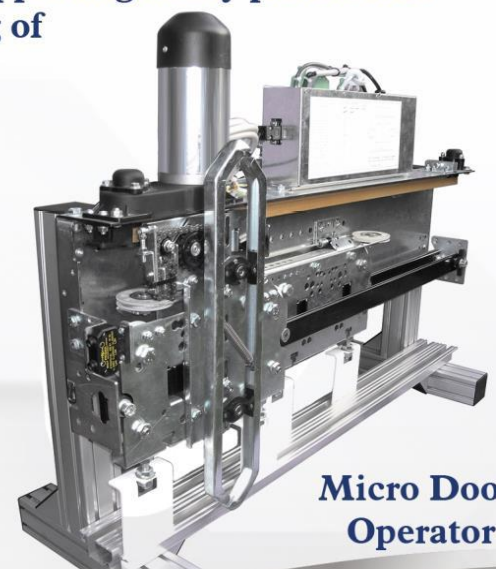
The **MICRO** car door operator is the most recent result of the R & D activities carried out by prisma and it has been designed to comply with the new standard regulating machine roomless lifts (MRL). In order to improve safety during assembly and maintenance operations on MRL lifts, it is important that nothing hinders access to the car roof. The **MICRO**, thanks to its reduced overall dimensions, is fitted to the car front wall and therefore it doesn't project onto the car roof

Mega Door Operator:

- The **MEGA** series is the answer to customer requirements for high-performing products in extreme conditions, with considerable opening dimensions and heavy panels it is designed for the high intensity of use.
- The **MEGA** is the only door in the world equipped with a truck sliding rails with a 14 x 70 mm thick section, and 90mm sliding rollers for supporting heavy panels and a simple but state-of-the-art system for continuous cleaning of the rollers.



Macro Door Operator



Micro Door Operator

ELEVATOR MACHINES



MACHINE GEAR BOX:

GEM Motors (Made in Italy):

- GEM motors are dedicated to shaping the future of Small and Light Electric Mobility with advanced, high quality, reliable and smart electric drive solutions that increase the attractiveness of small urban electric vehicles for daily transportation. The build quality and design are superb and overall power is great.

- GEM Motor have a complete range of products for useful load from 320 Kg to 2000Kg and speed up to 2m/s, products reliability and quality, with competitive prices, are just a few characteristics that makes GEM S.R.L. the right partner to work with. Optimal functionality and safety of use are guaranteed by the highest quality materials utilised, highest quality materials utilised, all of them of Italian origin, with the excellent standard of production and rigorous final testing of every component.

MACHINE GEARLESS:

(ZIEHL-ABEGG /SICOR /ALBERTO SASSI) MOTORS:

Top brands in the world .with guarantee five years .work in hard and Difficult Situations. elevator motors with perfectly matched control technology ensure a safe and smooth ride. Whether in new construction or remodels, offers customer-specific solutions for individual requirements in the area of elevator technology – powerful, energy-saving, quiet and economical.



ELEVATOR SENSORS

Movilift Boy Photocell:

(Made in ITALY).

- Integrated control EN81.80.
- low costs.
- High performance.
- Light curtain



CENTA Overload sensor:

(Made in TURKEY).

- Producing according to the European standards , with high advance quality technology
- Our Sensor constantly monitors the load inside the cabin and signals the motor that drives the cabin to apply the right torque when travelling. The Sensor is more accurate than traditional methods and offers a better over-time result without the need for frequent calibrations



Elevator Buttons:

(Grnemek brand-Made in TURKEY)

GENEMEK offer the best quality products from ,push-buttons, call buttons, LCD display, sliding digital and -7segment indicators, controlled transition systems and plug&play systems in the elevator sector. Genemek is the largest in Europe and second-largest in the World..

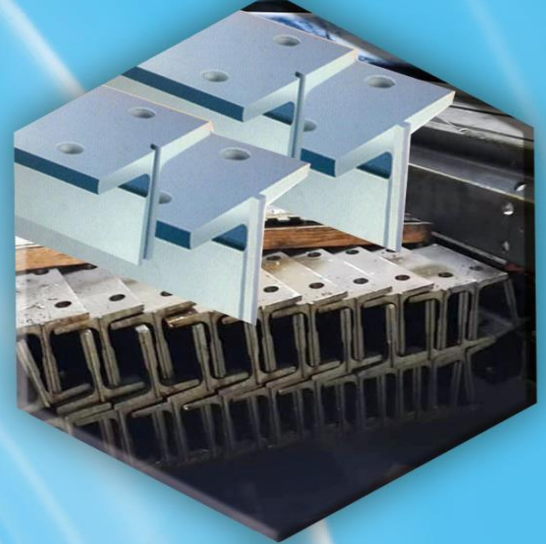


GUIDE RAILS :

- monteferro /çelkray – Brands:

- Sturdily construction
- Longer functional life
- Easy installation
- Fine finish
- Optimum strength
- High quality
- Low maintenance
- Rustproof Application

High- speed guide rails For all major sizes of machined guide rails according to ISO, JIS and other standards as well as for Customer-specific standard, reduced tolerances and special requirements are offered based on ride comfort and elevator speed application from around 4 m/sec to over 10 m/sec. The rails High Quality and Match guide rails have set a standard for this demanding market.



SPEED GOVERNOR

The task of the aresforti speed governor is to engage the safety catch if the lift car exceeds a specific descending speed. According to the standard EN50:2014/20-81 an overspeed is reached when the actual speed exceeds the rated speed of a lift by more than 15 %.



FLEXIBLE FLAT CABLE

with a special structural design, long life, the maximum increase in the elevator production enterprises operating efficiency. The elevator control cable provides overall electrical control with long suspension length and mechanical stress. Elevator cable for the use of steel cable core, can be used for long-range suspension use occasions..



CONTROL PANEL

Arkel Brand : Germany quality .

Arkel is the Best brand in service fields such as lift controller cards, controller panels, emergency rescue systems, revision and alarm sets, VVVF driver, integrated lift controller unit production, designing and production of other electronic devices that are needed in the lift industry, research & development , and engineering. In order to provide maximum customer satisfaction, Arkel continues to develop itself constantly since they pay a great amount of attention to research & development , production, quality control, sales and after-sales services.



STEEL WIRE ROPES

- Rugged structure
- Low maintenance
- Optimum strength



- Precise design
- High tensile strength
- Anti-corrosive

Technical specification:

6mm, 6.5mm , 8 mm, 10 mm, 12mm ...ex.. wire rope • 6 mm wire rope used as governor rope, & 10 mm & 12 mm wire rope used for car frame and counter-frame. • Most frequently used and better contact on the sheave. • Good elongation properties

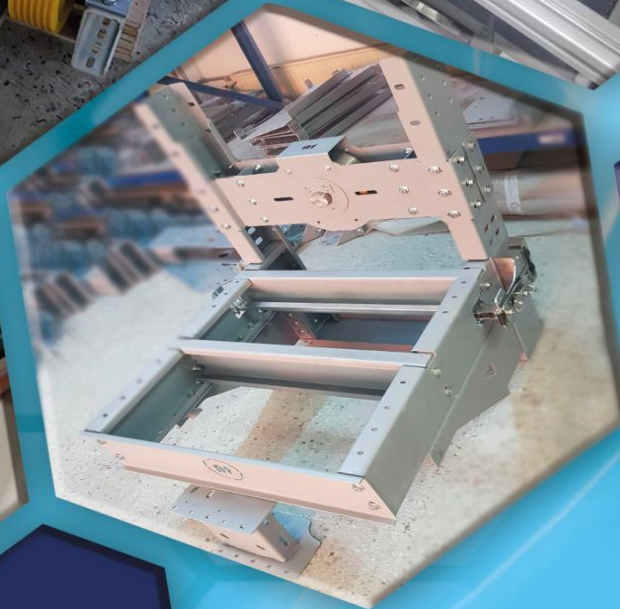
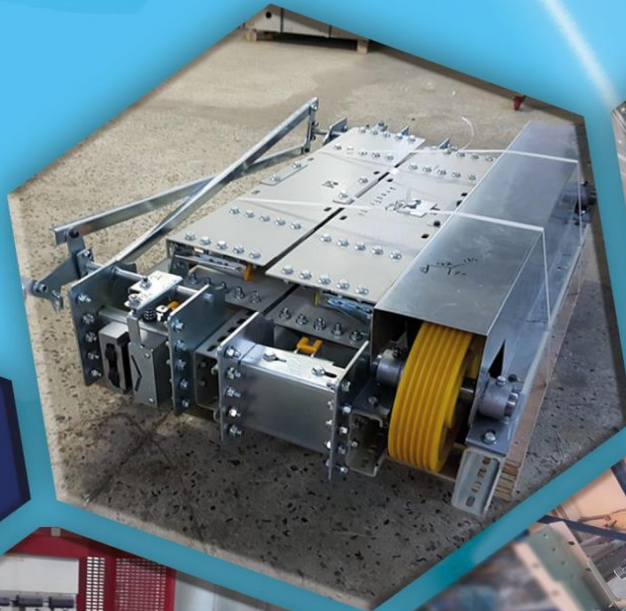
COUNTERWEIGHT BARITE

Roller Compacted Concrete (RCC). Filling can be used to provide the balance of the elevator cabin. There are many weights (50-40-30-25)kg.with different length (56-60- 96-76)cm.

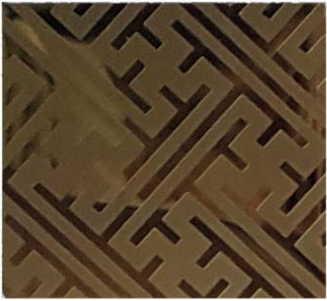


ELEVATOR FRAME AND CHASSIS

- High efficiency
- Enhanced durability
- Crack resistance
- A Car frame is made from structural steel to support cabin platform & enclosure with safety device underneath the frame.
- Instantaneous Safety blocks are provided to stop & hold the elevator, in case excessive descending speed is attained. This is achieved by means of a speed governor installed in the machine room, connected to the cabin, by means of a steel wire rope, with necessary devices.
- Safety gear electrical contacts are mounted on car top frame. It cuts off safety circuit stopping the elevator, prior to application of safety gear.
- Adjustable car frame 1140mm to 1440mm are used and all common suspension types 1:1 and 2:1 are used
- Long service life
- Immaculate finish
- Simple design



STAINLESS STEEL FLOOR PATTERNS



**SG-285 MIRROR ETCHED
TI-GOLD**



SM-185 MIRROR ETCHED



**SG-288 MIRROR ETCHED
TI-GOLD**



SM-188 MIRROR ETCHED



**SG-287 MIRROR ETCHED
TI-GOLD**



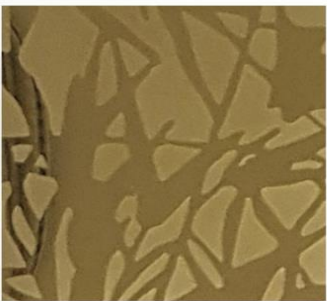
SM-187 MIRROR ETCHED



**SG-290 MIRROR ETCHED
TI-GOLD**



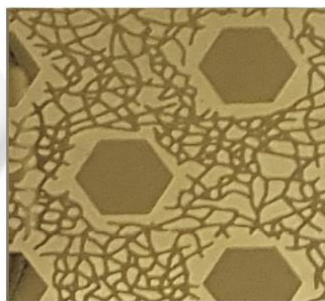
SM-190 MIRROR ETCHED



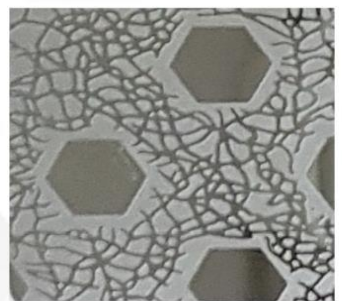
**SG-289 MIRROR ETCHED
TI-GOLD**



SM-189 MIRROR ETCHED



**SG-203 MIRROR ETCHED
TI-GOLD**



SM-103 MIRROR ETCHED



SM-140 MIRROR ETCHED



SM-110 MIRROR ETCHED



**SG-202 MIRROR ETCHED
TI-GOLD**



SM-102 MIRROR ETCHED

STAINLESS STEEL FLOOR PATTERNS



SM-141 MIRROR ETCHED



**SG-241 MIRROR ETCHED
TI-GOLD**



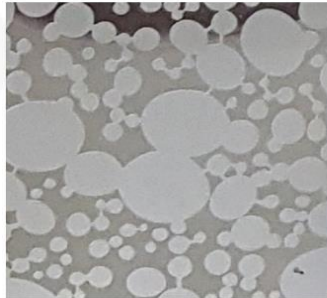
**SG-280 MIRROR ETCHED
TI-GOLD**



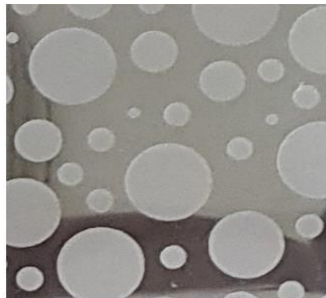
SM-180 MIRROR ETCHED



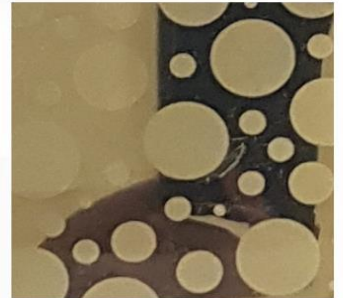
**SG-281 MIRROR ETCHED
TI-GOLD**



SM-181 MIRROR ETCHED



SM-166 MIRROR ETCHED



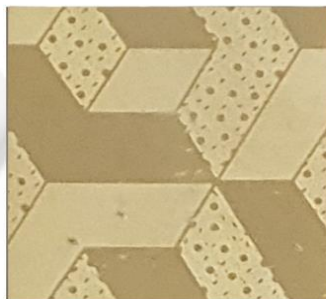
**SG-266 MIRROR ETCHED
TI-GOLD**



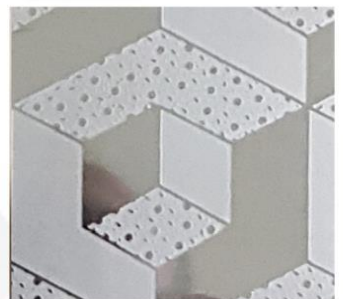
SM-184 MIRROR ETCHED



**SG-284 MIRROR ETCHED
TI-GOLD**



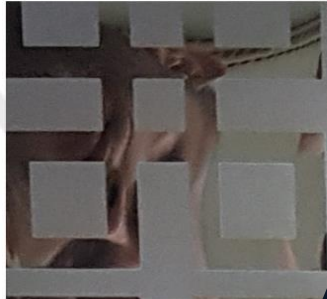
**SG-282 MIRROR ETCHED
TI-GOLD3**



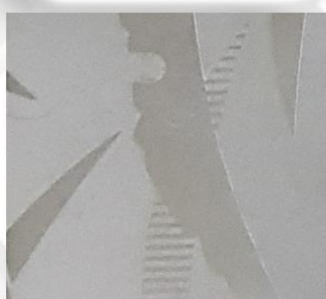
SM-182 MIRROR ETCHED



**SG-286 MIRROR ETCHED
TI-GOLD**



SM-186 MIRROR ETCHED

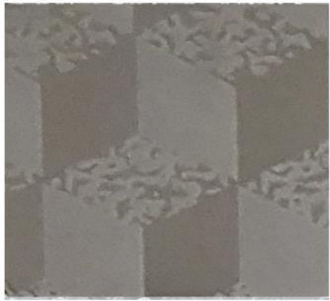


SM-183 MIRROR ETCHED

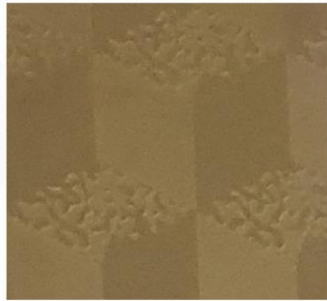


**SG-283 MIRROR ETCHED
TI-GOLD**

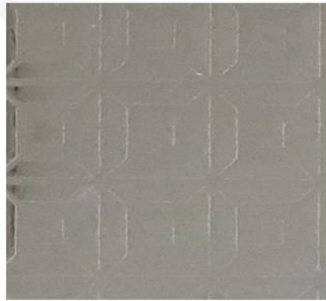
STAINLESS STEEL FLOOR PATTERNS



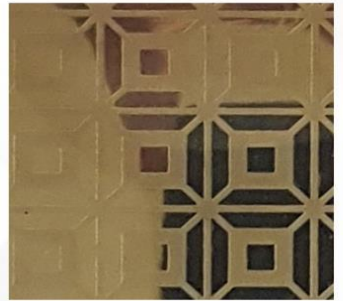
SM-119 MIRROR ETCHED



**SG-219 MIRROR ETCHED
TI-GOLD**



SM-138 MIRROR ETCHED



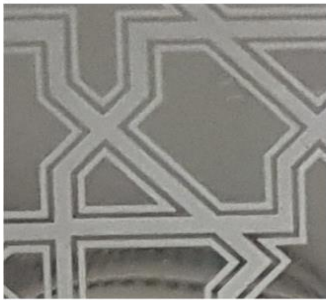
**SG-238 MIRROR ETCHED
TI-GOLD**



SM-120 MIRROR ETCHED



**SG-220 MIRROR ETCHED
TI-GOLD**



SM-123 MIRROR ETCHED



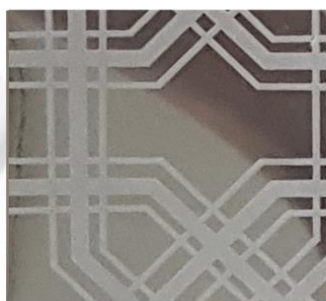
**SG-223 MIRROR ETCHED
TI-GOLD**



SM-122 MIRROR ETCHED



**SG-222 MIRROR ETCHED
TI-GOLD**



SM-126 MIRROR ETCHED



**SG-226 MIRROR ETCHED
TI-GOLD**



SM-130 MIRROR ETCHED

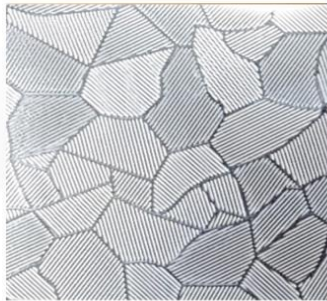


**SG-230 MIRROR ETCHED
TI-GOLD**

STAINLESS STEEL FLOOR PATTERNS



LEATHER EMBOSSED



AUSTENITE EMBOSSED



AUSTENITE GOLD EMBOSSED



SM-106 MIRROR ETCHED



SG-206 MIRROR ETCHED TI-GOLD



SM-108 MIRROR ETCHED



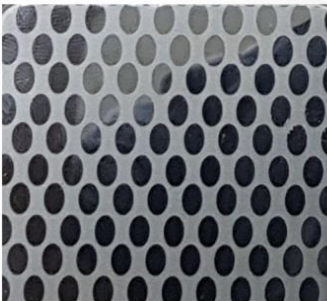
SG-208 MIRROR ETCHED TI-GOLD



SM-111 MIRROR ETCHED



SG-211 MIRROR ETCHED TI-GOLD



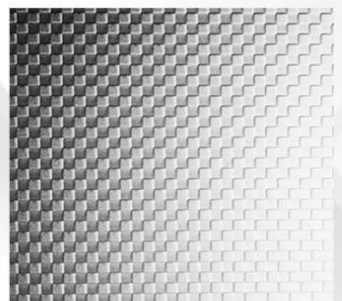
SM-115 MIRROR ETCHED



SM-118 MIRROR ETCHED



SG-218 MIRROR ETCHED TI-GOLD



SQUARE EMBOSSED

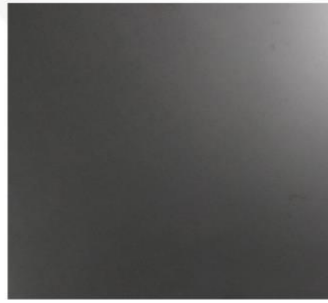
STAINLESS STEEL FLOOR PATTERNS



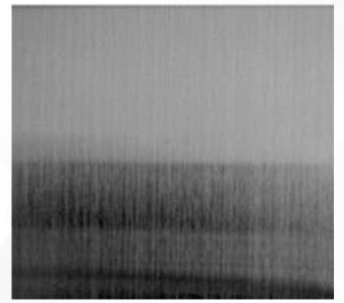
LINEN EMBOSSED



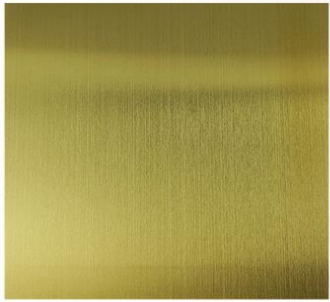
HAIRLINE TI-ROSE



MIRROR TI-BLACK



HAIRLINE TI BLACK



HAIRLINE TI-GOLD



MIRROR TI-GOLD



MIRROR TI-COPPER



HAIRLINE TI-COPPER



MIRROR TI-ROSE



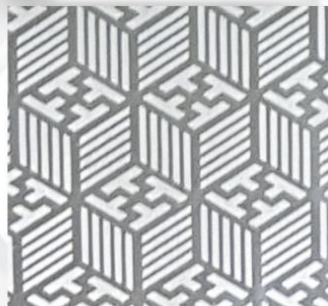
MIRROR



MIRROR TI-BRONZE



HAIRLINE TI-BRONZE



SM-144 MIRROR ETCHED



**SR-344 MIRROR ETCHED
T-ROSE**

LAMINAT PATTERNS



AF101



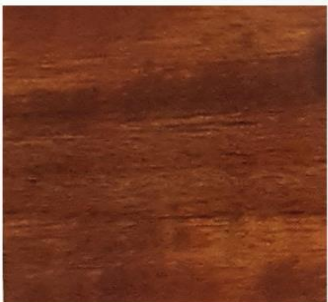
AF102



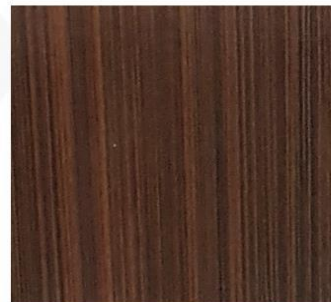
AF103



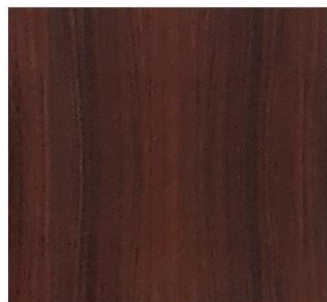
AF104



AF105



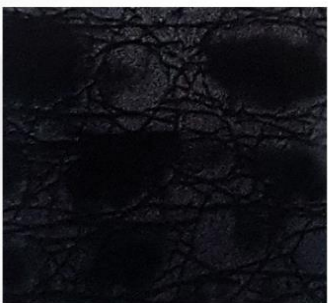
AF106



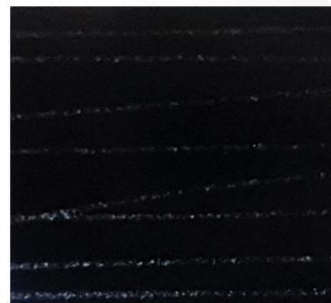
AF107



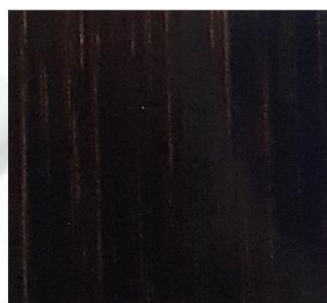
AF108



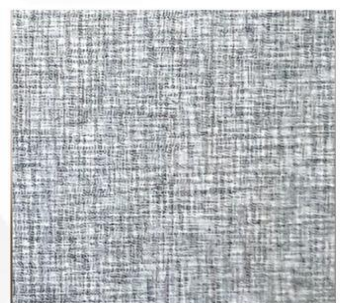
AF109



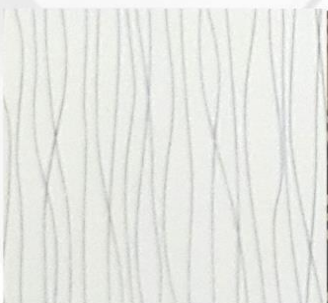
AF110



AF111



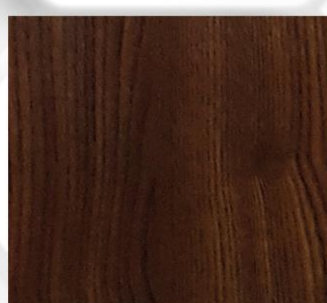
AF112



AF113



AF114



AF115



AF116

MARBELS PATTERNS



AF201



AF202



AF203



AF204



AF205



AF206



AF207



AF208



AF209



AF210



AF211



AF212

PVC FLOOR PATTERNS



Z-001



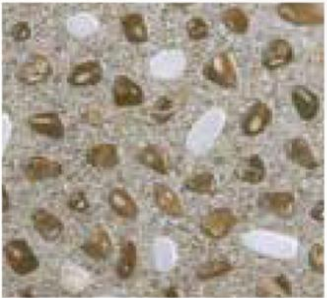
Z-002



Z-003



Z-004



Z-005



Z-006



Z-007



Z-008



Z-009



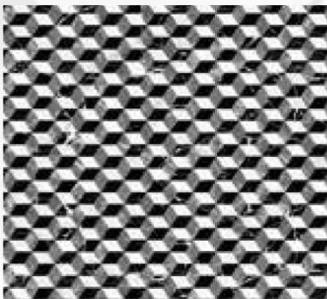
AF-Z4101



AF-Z4020



AF-Z3000



AF-Z4010



AF-Z3010



AF-Z4100



AF-Z4010

PVC FLOOR PATTERNS



AF-Z4010



AF-Z4010



AF-Z4010



AF-Z4010



AF-Z4010



AF-Z4010



AF-Z4010

SAC FLOOR PATTERNS



AF301



AF302



AF303

CONTACT US

We are more than happy to hear your inquiry

And your opinion is very important to build the right relationship.

MOB number: +971 /055 92 654 91

WWW.YEARLYSERVICECO.COM